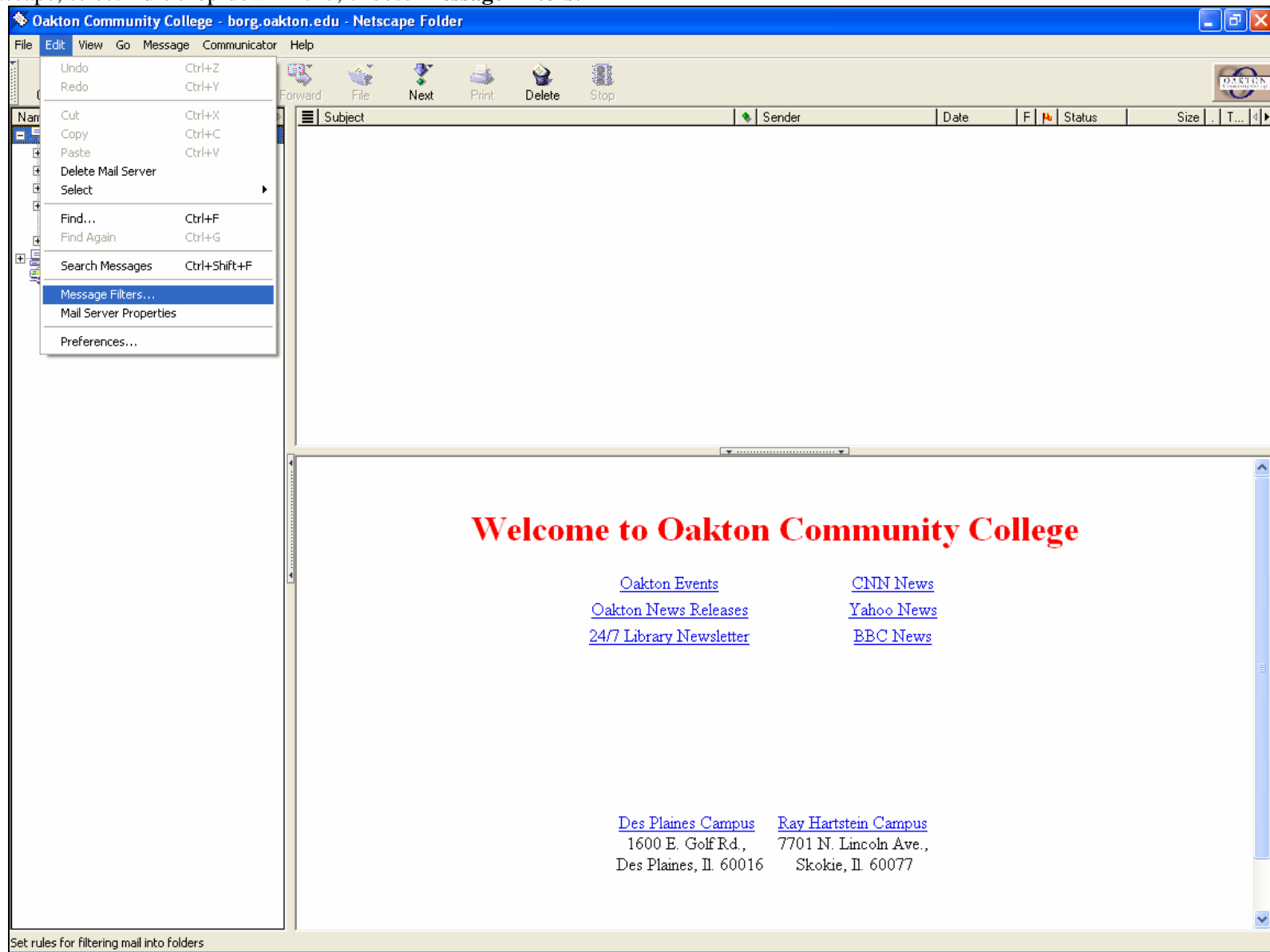


Creating a Netscape Filter to Process Email Tagged as Spam

created Sept 2006

1) Launch Netscape, select **Edit** drop-down menu, choose **Message Filters**:



2) Choose **New**, then create the rule as depicted:

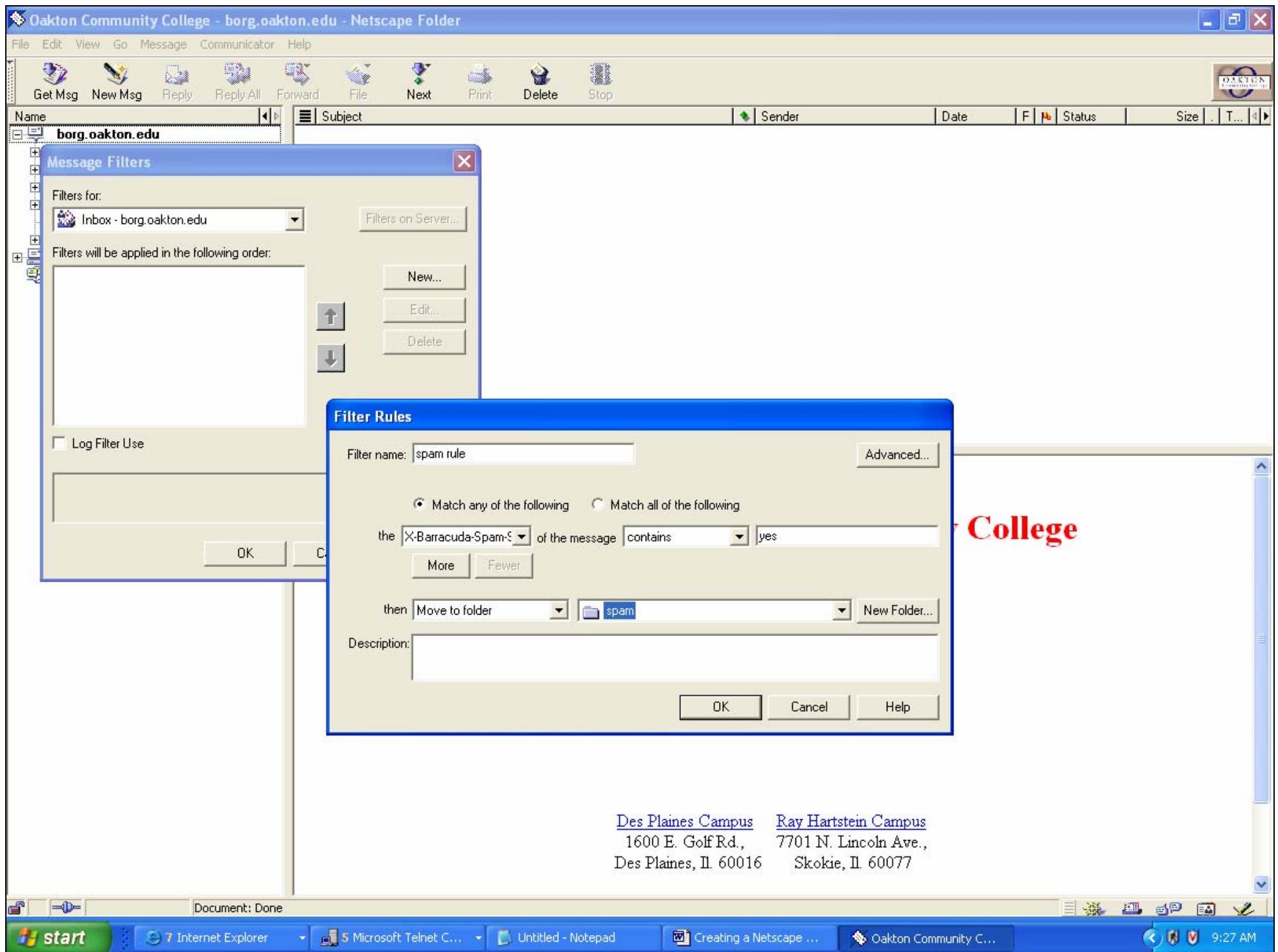
(**Filter Name** is optional);

Choose **X-Barracuda-Spam-Status** in the drop-down list;

Type the word **Yes** in the text box to the right (case doesn't matter);

From the folder drop-down list, select an existing folder or click to create **New Folder**;

Click **OK**.



3) Your Netscape filter is now set up.