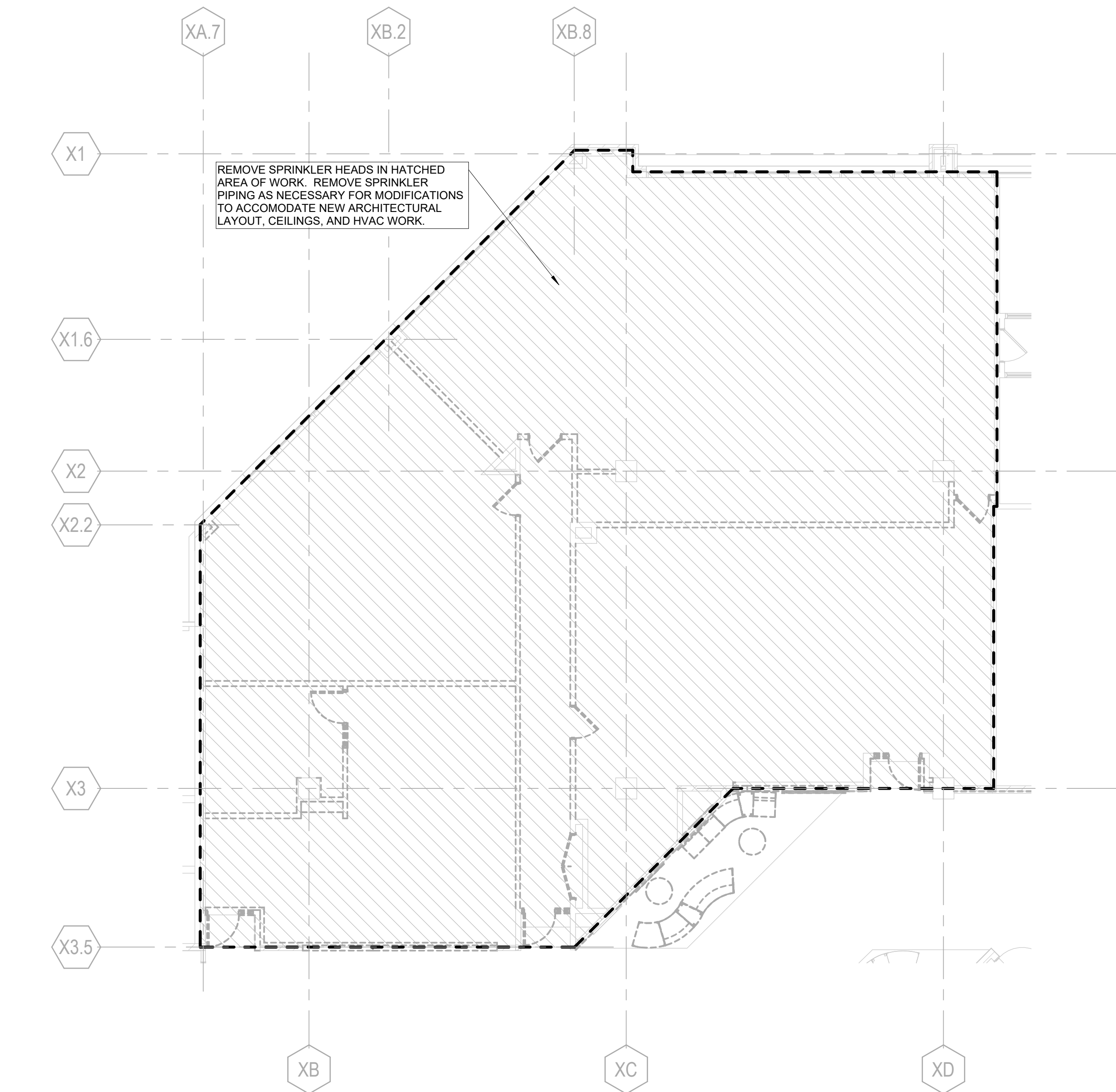
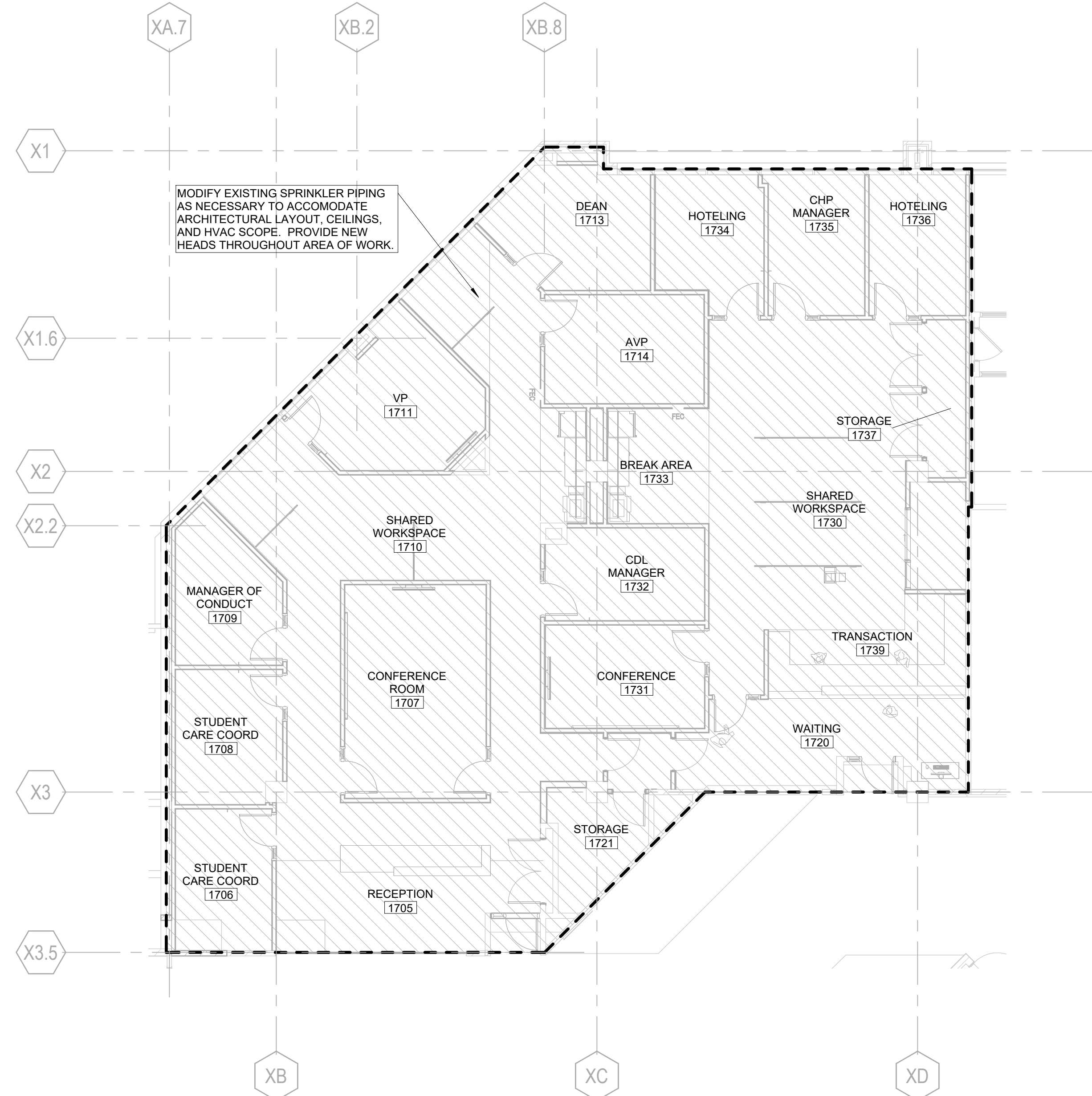


12/15/2025 4:12:12 PM Autodesk Docs: /2024 Oakton College - 1st & 2nd Floor Adj Ren/2024-OAKTON DES PLAINES-MEPP-2023-CENTRAL-INT



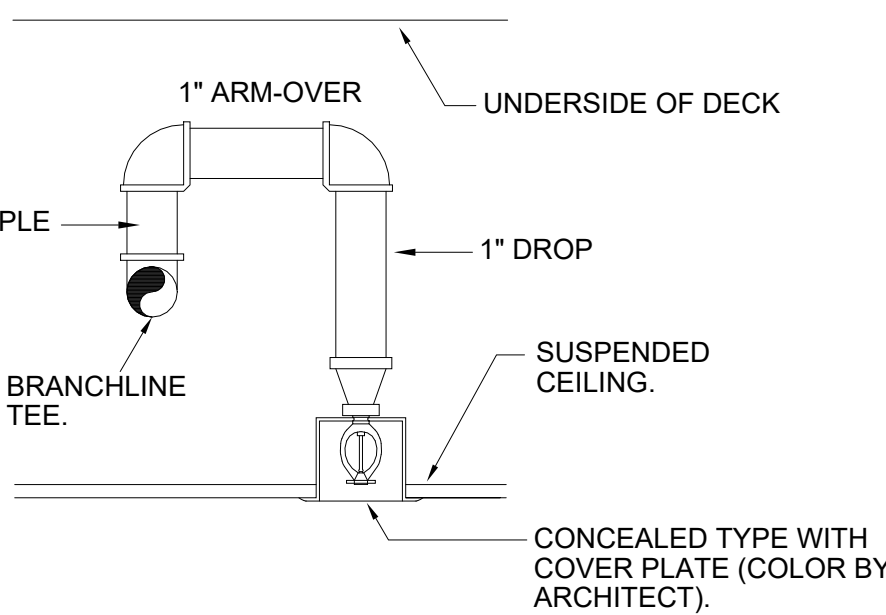
1 LEVEL 01 FIRE PROTECTION DEMOLITION PLAN - OSA / WORKFORCE TRAINING
1/8" = 1'-0"



2 LEVEL 01 FIRE PROTECTION PLAN - OSA / WORKFORCE TRAINING
1/8" = 1'-0"

FIRE PROTECTION GENERAL NOTES:

- CONTRACTOR SHALL BE RESPONSIBLE FOR VISITING THE SITE AND VERIFYING ALL EXISTING FIELD CONDITIONS PRIOR TO SUBMISSION OF HIS BID. CONTRACTOR SHALL DOCUMENT ELECTRONICALLY ACTUAL LOCATION AND ROUTING OF EXISTING SPRINKLER PIPING AND SPRINKLER HEADS.
- CONTRACTOR SHALL BE RESPONSIBLE FOR THE ENGINEERING OF THE FIRE SUPPRESSION SYSTEM, INCLUDING PREPARATION OF WORKING PLANS, CALCULATIONS, AND FIELD TEST REPORTS. ENGINEERING SHALL BE PERFORMED BY A QUALIFIED LICENSED PROFESSIONAL ENGINEER WHO SHALL SEAL AND SIGN ALL WORKING PLANS, DETAILS AND CALCULATIONS.
- EACH SPRINKLER HEAD OUTLET WITHIN THE SPACE SHALL FEED A SINGLE SPRINKLER HEAD. MODIFY THE EXISTING SPRINKLER PIPING FOR PROVIDING WATER SUPPLY TO THE ADDITIONAL SPRINKLER HEADS ADDED AS REQUIRED PER NFPA 13 IN EXISTING AREAS WHERE NEW SPRINKLER PIPING IS INSTALLED AND/OR MODIFIED.
- ALL NEW MATERIAL AND EQUIPMENT SHALL BE LISTED BY U.L. AND APPROVED BY F.M.
- IN THE FINISHED CEILING AREAS, SPRINKLER HEADS SHALL BE QUICK RESPONSE CONCEALED PENDENT TYPE WITH COVER PLATE COLOR TO BE SELECTED BY ARCHITECT. IN AREAS WITHOUT CEILING, SPRINKLER HEADS TO BE UPRIGHT OR SIDEWALL. ALL SIDE WALL OR UPRIGHT SPRINKLER HEADS SHALL BE PROVIDED WITH PROTECTIVE COVER. ALL UPRIGHT & SIDEWALL SPRINKLER HEADS AND PROTECTIVE COVER FINISHES & COLOR TO BE SELECTED BY THE ARCHITECT. ORIFICE SIZE, MAKE AND MODEL OF SPRINKLER HEADS SHALL MATCH WITH THE BUILDING SPRINKLERS RATED AT 175 PSI, BUT WHERE SYSTEM PRESSURES EXCEED 175 PSI, PROVIDE HIGH PRESSURE SPRINKLER HEADS. ACCEPTABLE MANUFACTURERS ARE: VICTAULIC, VIKING, TYCO, AND RELIABLE.
- MAINTAIN MINIMUM CLEARANCE OF 18 INCHES OR GREATER BETWEEN SPRINKLER HEAD DEFLECTOR AND THE TOP OF MATERIAL STORED BENEATH.
- CONTRACTOR IS RESPONSIBLE FOR COORDINATING HIS WORK WITH THE WORK OF ALL OTHER TRADES AND MAKING ANY NECESSARY MODIFICATIONS TO HIS WORK AT NO ADDITIONAL COST, INCLUDING ALL OFFSETS.
- CONTRACTOR SHALL REMOVE EXISTING EQUIPMENT AND MATERIALS PERTAINING TO HIS CONTRACT AS SPECIFIED OR AS REQUIRED WHETHER SHOWN ON THE DRAWINGS OR NOT, TO PREPARE FOR THE NEW WORK. ANY COMPONENT OF THE EXISTING SYSTEM REQUIRING REPLACEMENT OR UPGRADE TO MEET CODES MUST BE REPLACED WITH NEW. REROUTE EXISTING PIPING, RELOCATE EXISTING SPRINKLER HEADS AND ADD NEW SPRINKLER HEADS AS REQUIRED TO ACCOMMODATE NEW WALLS, STRUCTURAL COMPONENTS AND/OR CHANGES MADE BY OTHER TRADES.
- CONTRACTOR SHALL INSTALL SPRINKLER SYSTEM IN ACCORDANCE WITH THE REQUIREMENTS OF NFPA-13, IFC 2015 AND LOCAL BUILDING CODES.
- SUBMIT COORDINATED SHOP DRAWINGS TO ARCHITECT, LOCAL FIRE PREVENTION BUREAU AND OWNERS INSURANCE UNDERWRITERS FOR REVIEW AND APPROVAL PRIOR TO THE INSTALLATION OF A FIRE SUPPRESSION SYSTEM. THE SHOP DRAWINGS SHALL INCLUDE AND SHOW THE BASIS OF COMPLIANCE WITH THE DESIGN DENSITY AND THE SPECIFIC ARRANGEMENT OF THE SYSTEM. THE DETAILS ON THE SHOP DRAWINGS SHALL INCLUDE HANGER LOCATIONS, EXISTING AND NEW PIPE SIZING AND ELEVATIONS, DUCTWORK, DIFFUSERS, REGISTERS, MECHANICAL EQUIPMENT, LIGHT FIXTURE AND SPRINKLER HEAD LOCATIONS AND MUST BE SUBMITTED PRIOR TO FABRICATION AND INSTALLATION. THE SHOP DRAWINGS SUBMITTAL SHALL BE SIGNED AND SEALED BY THE CONTRACTOR'S QUALIFIED LICENSED PROFESSIONAL ENGINEER. SUBMITTAL SHALL ALSO INCLUDE MANUFACTURER'S INSTALLING INSTRUCTIONS FOR ANY SPECIALLY LISTED EQUIPMENT INCLUDING DESCRIPTIONS, LIMITATIONS FOR ANY SPRINKLER DEVICES, AND FITTINGS.
- CONTRACTOR IS RESPONSIBLE FOR COORDINATING SPRINKLER HEAD LOCATIONS WITH ARCHITECTURAL REFLECTED CEILING PLANS. SPRINKLER HEAD LOCATIONS ON THE SHOP DRAWINGS ARE SUBJECT TO APPROVAL BY THE ARCHITECT.
- SPRINKLERS SHALL BE PLACED IN THE CENTER OF CEILING TILES IN BOTH DIRECTIONS.
- PROVIDE ACCESS PANELS FOR ALL VALVES, FLOW SWITCHES AND OTHER ITEMS REQUIRING SERVICE AND ACCESSIBILITY ABOVE NON-ACCESSIBLE CEILING.
- CONTRACTOR IS RESPONSIBLE TO SAW-CUT EXISTING WALLS, CORE FLOORS AND CEILINGS FOR INSTALLING NEW PIPING. ALL NEW PIPING PENETRATIONS SHALL BE PROPERLY SEALED WITH U.L. LISTED FIRE STOPPING MATERIALS TO MAINTAIN THE REQUIRED FIRE RESISTANCE RATING, REGARDLESS IN THE EXPOSED CONSTRUCTION AREAS OR ABOVE DROPPED-CEILING AREAS.
- CONTRACTOR SHALL SIZE SPRINKLER PIPING HYDRAULICALLY IN ACCORDANCE WITH THE REQUIREMENTS OF NFPA-13 2013 EDITION AND IFC 2015 UNLESS NOTED OTHERWISE. PROVIDE PERMANENT METAL PLACARD AT THE BASE OF EACH RISER, INDICATING THE DESIGN, AREA, FLOW AND PRESSURE REQUIRED FOR EACH SYSTEM.
- POOLING OF CUTTING OILS OR OTHER PETROLEUM BASED PRODUCTS IN THE SPRINKLERS MUST BE AVOIDED. THEREFORE, ALWAYS CUT AND THREAD PIPE WITHOUT THE SPRINKLER PIPING BEING ATTACHED AND BE SURE TO CHECK, DIFFUSERS, REGISTERS, MECHANICAL EQUIPMENT & ELECTRICAL THE CONTRACTOR SHALL BE RESPONSIBLE FOR DETERMINING THE ACTUAL LOCATION AND ROUTING OF THE EXISTING PIPING.
- ALL PERMITS, FEES, LICENSES, APPROVALS, AND OTHER ARRANGEMENTS FOR WORK SHALL BE OBTAINED BY THE CONTRACTOR AT HIS OWN EXPENSE.
- CONTRACTOR SHALL GUARANTEE ALL WORK AND MATERIAL FOR ONE YEAR AFTER COMPLETION AGAINST ALL DEFECTS OF MATERIAL, EQUIPMENT, AND WORKMANSHIP.
- PROVIDE COMPETENT OPERATING TECHNICIAN TO INSTRUCT THE OWNER IN THE OPERATION AND MAINTENANCE OF THE INSTALLED EQUIPMENT.
- THE DRAWINGS INDICATE THE ZONING, GENERAL CHARACTER, AND LOCATION OF WORK INCLUDED, BUT HAVING DETAILS OMITTED WHICH ARE TO BE PROVIDED WITHOUT EXTRA COST.
- STEEL PIPE WITH WALL THICKNESS LESS THAN SCHEDULE 40 SHALL NOT BE JOINED BY THREADED FITTINGS. ALL PIPE SHALL BE MARKED CONTINUOUSLY ALONG ITS LENGTH BY THE MANUFACTURER IN SUCH A WAY AS TO PROPERLY IDENTIFY THE TYPE OF PIPE.
- FITTINGS SHALL BE RATED FOR 175 PSI.
- SUPPORT NEW WATER EXTINGUISHING PIPING IN ACCORDANCE WITH THE REQUIREMENTS OF NFPA-13. WHEN THE MAXIMUM PRESSURE AT THE SPRINKLER EXCEEDS 100 PSI, THE UNSUPPORTED LENGTH BETWEEN THE END SPRINKLER IN A PENDENT POSITION OR DROP NIPPLE OR ARMOVER AND THE LAST HANGER ON BRANCH LINE SHALL NOT BE GREATER THAN 12 INCHES.



NIPPLE & REDUCING ELBOW
SUPPLYING SPRINKLER HEAD
NO SCALE

Perkins&Will

410 North Michigan Ave.
Suite 1600
Chicago, IL 60611
1 312.755.0770
www.perkinswill.com

CONSULTANTS

MEP
MECHANICAL SERVICES ASSOC. CORP.
111 S. VIRGINIA STREET
CRYSTAL LAKE, IL 60014

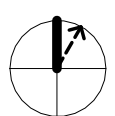
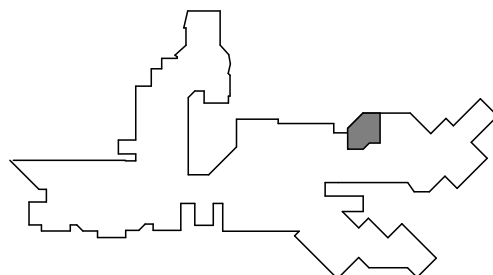
PROJECT

ADJANCENCIES
RENOVATIONS - PHASE
2A - OSA AND
WORKFORCE TRAINING

DES PLAINES CAMPUS
1600 EAST GOLF ROAD
DES PLAINES, IL, 60016



KEY PLAN



ISSUE CHART

1	ISSUED FOR BID	15 DEC 25
DATE	DATE	DATE
Job Number	021075.002	TITLE

FIRE PROTECTION
PLANS - PHASE 2A

SHEET NUMBER

11.FP10-01